

## WARD 3 SHORT TERM FAMILY HOUSING (STFH) PHASE II STFH FACILITY CONSTRUCTION UPDATE March 29, 2019

50 Short-Term Family  
Housing Units

Dedicated Play & Common  
Areas

Supportive Programs

Community-Integrated  
Architectural Design

### Project Status:

- New Pepco transformer preparations are on going, excavated soil is being removed from site.
- Conduit installation for secondary Pepco service is on going.
- Podium Slab framing and shoring has been removed and temporary guardrails have been installed.
- Crane has mobilized on site.
- Structural steel has been delivered for the second floor framing.

### Community Advisory:

- Material deliveries will be on a weekly basis provide structural steel, steep panels, metal decking, reinforcing steel, wood for framing shoring and more as floor installation progresses.
- Concrete Pours for the elevated decks will be on a 2 week per floor pour cycle.
- PEPCO Power Transfer has been re-scheduled for the Weekend of April 19.
- The general contractor on site, Smoot, has flaggers that will manage traffic control and safety during all deliveries.

**Questions?** Please direct all inquiries to [STFHprojects.dgs@dc.gov](mailto:STFHprojects.dgs@dc.gov)

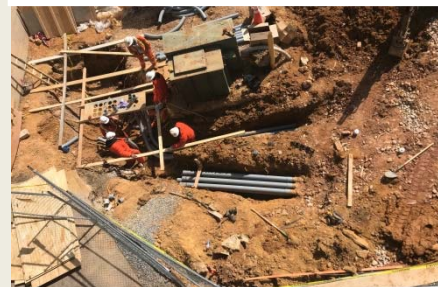
**Structural Steel on Podium Slab**



**Crane mobilized on site**



**Pepco Preparation**



***For your safety, only authorized personnel are allowed to access the construction sites***